

A photograph of three people wearing outdoor gear, including helmets and goggles, looking down at a bright light source in a dark environment. The light source is held by one of the individuals, and the scene is dimly lit, suggesting a cave or a night-time outdoor activity. The background is dark and textured.

**REAL ADVENTURE**

**REAL FUN**

**REAL EDUCATION**

*in the real outdoors*



**North Yorkshire**  
**Outdoor Learning Service**

# What is Outdoor Learning?

We combine lots of fun with life affirming experiences, confidence building, motivation and positivity as well as educational skills and social learning



Welcome to...



Built in 1940 and set in 17 acres of beautiful Nidderdale countryside

The ideal location for your outdoor learning residential

Rivers, crags, forests, caves and hills; the Yorkshire Dales on our doorstep.



# Your accommodation

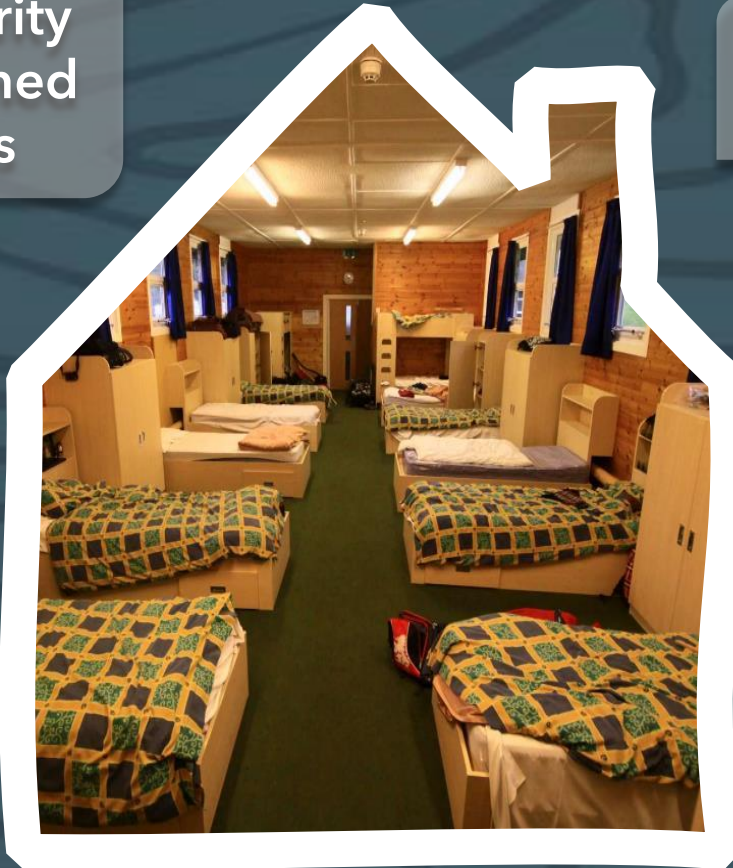
Connected  
teacher  
bedrooms

Security  
alarmed  
doors

Single or  
bunk beds

All dorms have  
showers and  
toilets in the  
same building

Wardrobes and  
shelves for  
belongings



Bedding  
provided;  
learn to make  
a bed!

Drying  
rooms for  
wet kit

Accessible rooms

# Facilities

- Shared dining room
- Games room: table tennis, pool tables, table football, board games, and all things disco (music, lights and disco ball)
- Common room
- Tuck shop
- Classroom spaces with projectors and screens
- Assembly hall with stage and large screen
- Camp fires
- Large outdoor spaces



# What makes Bewerley Park different?

We link all outdoor education to curriculum learning, across all key stages

Our highly qualified and experienced staff prioritise positive, consistent relationships to maximise learning

We work with small group sizes to ensure all students are engaged and high-quality experiences are provided



# How will you learn?

These are the foundations of how you will learn on your course. Your individual aims and objectives will build on these aspects.

- ✓ Connect with nature
- ✓ Understand the natural world
- ✓ Learn how to have minimal impact

**Environmental  
Awareness**

- ✓ Enjoyment and confidence
- ✓ Learning and skills
- ✓ Broaden your horizons

**Personal Growth**

- ✓ Social awareness
- ✓ Communication and problem solving
- ✓ Teamwork and leadership

**Social Skills**

# A typical day at Bewerley Park







Mountain Biking



Canoeing



Rock Scrambling



Bushcraft



High Ropes



Mine Exploring



Kayaking



Paddle Boarding



Mountain Walking



Team Challenges

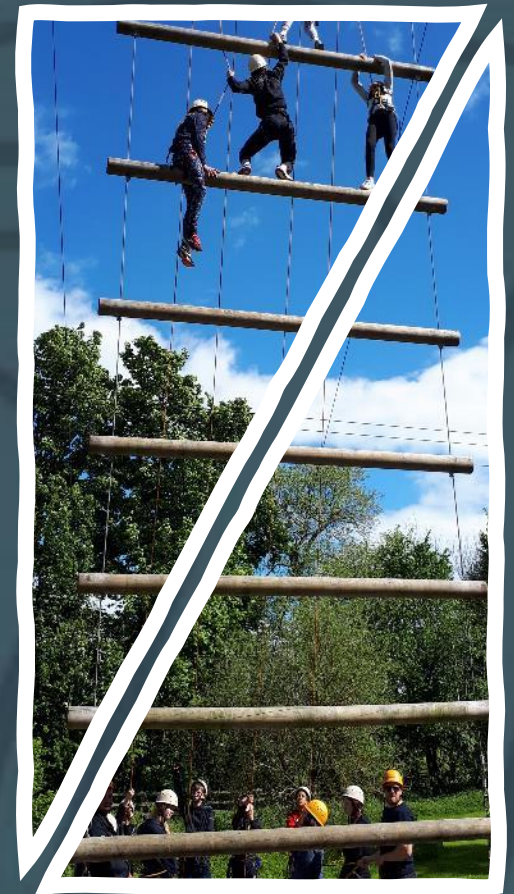


Caving

# Do you have to take part?

One of our core values is "Challenge by Choice"

We will encourage you and coach you to get the most out of every part of the trip but the choice is always yours



# The importance of a residential

The residential aspect of your stay holds a huge amount of opportunity for learning too...

Time away from home builds independence



Taking care of yourself



Spending time with friends



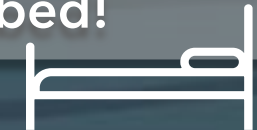
Getting enough sleep



Being organised



Making a bed!



Getting to know new people



More green-time less screen-time!



This is all as valuable as the outdoor adventures



# Who's here?

Our exceptional qualified teaching staff have many years experience

Where possible you will have the same teaching staff throughout your course

We ensure our visitors have the best time whilst maintaining safety

We receive great comments and feedback about our staff from participants of all ages



# Risk management

We are licensed and inspected by the HSE through AALA

Everything we do has been risk assessed by highly qualified professionals

We dynamically risk assess throughout each activity to further ensure safety e.g. changing weather, groups needs

Students gain an understanding of risk management



# Site Security

The centre has security alarmed doors that are controlled by the staff in charge of that dormitory

We have centre duty staff on-call 24hrs

All centre staff wear uniform and are easy to identify

All visitors are required to sign-in and wear ID



# What will you eat?

Our on-site catering team provides a range of home cooked meals that will fuel our visitors for their activities

We have award-winning, world-famous Flapjack!

We are skilled at catering for special diets required by medical concerns, culture and religion



# Health and wellbeing

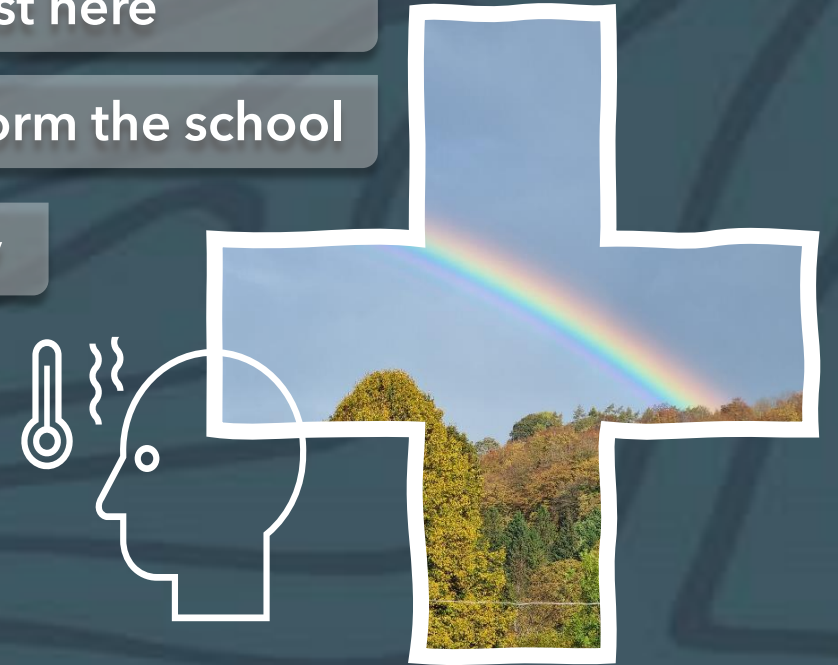
We will support your school staff in caring for your child whilst here

Please bring any essential medications and remember to inform the school

We will follow your school's own policy on sickness

Chemists, doctors, dentists all nearby

All staff here are first aiders





# Communication

We follow your schools policy on mobile phone use

School staff have 24hr access to our landlines

All our staff carry phones for emergency use

Our office is open daily from 9-5



# Driving



All our staff are MIDAS assessed minibus drivers with D1 Licences and CPC accreditation

All our vehicles are fitted with GPS trackers and can be remotely located from the centre



# Safeguarding

Everyone is safeguard trained and we have safeguard leads at both centres and direct links to the council

Dorms are separately designated and each dorm has separate staff and pupil bathrooms

We ensure that all children are listened to



# Behaviour

We will promote a culture of respect and teamwork that fosters good behaviour

We will support schools in implementing their own behaviour policy

We will always prioritise safety in behaviour management



# What do you need to bring?

Old warm clothes  
for activities -  
nothing precious!

Drinks bottle  
and torch

Toiletries and towel

Comfortable clothes  
for the evenings

Spare socks (more  
pairs than you think!)

Old trainers for  
wet activities

Full kit list available on our website



# How can you prepare?

Get outside;  
walking in the  
countryside/beach/  
park

Spend a night away  
from home

Find us online



Practice making  
a bed!

Try some new foods

Try a No-Device day!



# See you soon...

The end!

Thank you for your time today; we can't wait to see you...

Keep up to date via our socials



@nyols



...in the meantime, you can find loads of useful information on our website at...

[www.outdoored.co.uk](http://www.outdoored.co.uk)