



Federation of Ripley Endowed CE, Beckwithshaw and Kettlesing Felliscliffe Primary Schools

Growing Together, Guided by Love

Reading Newsletter - Autumn Term

This is our Christmas themed Reading Newsletter! While Santa is busy reading your lists, I wonder what you will be reading this Christmas?

Recommended Reads

EYFS	KSI	LKS2	UKS2

Christmas Reading Challenge

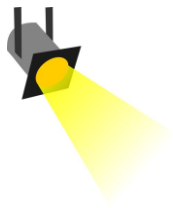
1. Read a Christmas themed book.	2. Have a whole family bedtime story.	3. Create a puppet show of your favourite book.
4. Read a story by your Christmas tree.	5. Read a book that is older than you!	6. Build a den and share a story in it.
7. Read a story with a friend.	8. Draw a picture from your favourite book.	9. Share a Christmas poem.
10. Read a book that makes you smile.	11. Read listening to Christmas music.	12. Read with your hat, scarf and gloves on!

Poetry Corner



Once upon a time I stood
With brothers and sisters in a wood.
The old trees told me I had grown
From a tiny seed inside a cone.
The whispering wind was a friend of mine.
She said that I would grow and shine.
I grew up tall. I grew up high.
I grew until I saw the sky.
Then came the day they cut me down
And carried me off to a distant town.
I travelled far across the sea,
And now I am a Christmas tree.
Here I stand, in a city square.
I stand and shine in the winter air.
The lions keep me company

And Nelson keeps an eye on me,
And people pass and stop awhile.
I love to see them gaze and smile.
But more, yes, more than anything
I love to hear the children sing.
Songs of reindeer, songs of snow,
Reminding me of long ago,
Songs of kings who travelled far,
And songs of light from a distant star.
I cannot stay forever here.
Another tree will come next year,
But think of me when I am gone;
Remember how I grew and shone,
And may the children grow and shine,
Grow and shine like the Christmas pine.



Spotlight on...



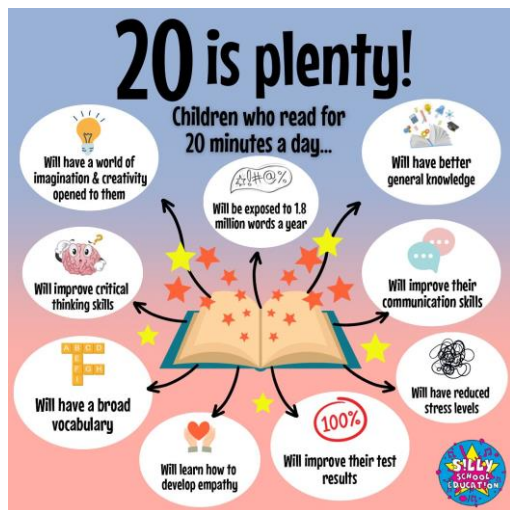
Inference

Inference involves the children reaching conclusions based on what they know or have already read especially character's thoughts and feelings.

Some questions you could ask are:

- ⇒ Why do you think...?
- ⇒ Find a word or phrase that shows me how _____ might be feeling?
- ⇒ Give me 2 reasons why they might feel this way.
- ⇒ What does the word _____ suggests/imply/tell you?
- ⇒ What do you think _____ might do next? Why?
- ⇒ What can you infer from the picture/description of the character/what they said/ how they moved?

Reading at home



Reading with your child at home is one of the most powerful ways to support their academic and emotional development. It fosters a love for reading, improves vocabulary, and strengthens comprehension skills.

Try:

- Reading together
- Storytelling
- Non-fiction texts
- Poetry and rhymes

Books to look forward to in 2025...

